

## Technical Parameter

Type	iReal 2E	
Light source	Category	Infrared VCSEL structured light
	Visibility	Invisible
	Safety	CLASS I (eye-safe)
	Technology	Infrared linear-array structured light
	Color reproduction	24 bit
Scanning features	Alignment mode without markers	Texture/feature/mixed alignments
	Human body scanning	Invisible light/hair/dark environment scanning; automatically remove the layers of body shaking
	Medium/large-sized object	Optimal scanning distance 350 mm ~ 650 mm
		Effective working range 250 mm ~ 1000 mm
Measurement rate	Maximum	1,500,000 points/s
Detail	Point distance	0.200 mm ~ 3 mm
Accuracy	Point accuracy (single frame)	Up to 0.100 mm
	Alignment accuracy	Up to 0.300 mm/m
Data output	Output formats	OBJ, STL, PLY, ASC, SK
	3D printing	Support
Hardware	Work temperature	5°C ~ 40°C
	Interface mode	USB 3.0
	Weight	850 g
	Dimensions	140 mm × 94 mm × 258 mm
	Configuration	3 sets of invisible light sources; 3 camera groups; 3 sets of auxiliary lights

# SCANTECH™

## I REAL 2E Color 3D Scanner



Expanded Vision for Effortless Smooth

Mehmet OVALI



**OFEMS A.Ş**  
 Üçevler Mahallesi, Ertuğrul (220.) Cad. No:89 D:Kat:3  
 DNo:5, 16270 Nilüfer/Bursa TÜRKİYE  
 CEP | +905336433320 E-POSTA | mehmet.ovali@ofems.com  
 TEL | +902249700476 FAX | +908505223403  
 WEB | www.ofems.com

[www.ofems.com.tr](http://www.ofems.com.tr)

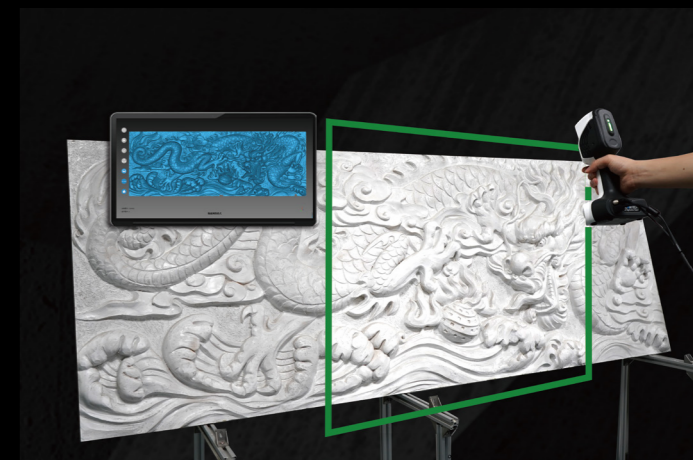
**iReal 2E color 3D scanner** maximizes the performance in depth of field, scanning area, algorithm, texture reproduction and detail capturing, specially designed for medium to large-sized objects and human body 3D scanning.

iReal 2E adopts the Infrared VCSEL structured light technology to bring you the safest and most comfortable 3D scanning experience. Without attaching markers, a quick texture capturing and geometry acquisition can be achieved. Mixed alignment modes meet various scanning situations.

With the advantages of cutting-edge algorithm functions, easy-to-use software, ergonomic design, portable and durable, iReal 2E creates an efficient, accurate and rich texture 3D color measurement solution.

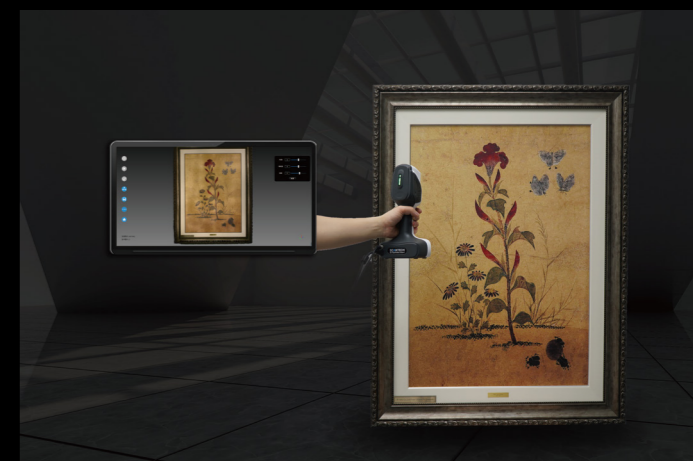
### Effortless Smooth

Flexible and smooth 3D scanning at medium to large-sized objects due to 850 mm x 800 mm scanning area and 750 mm depth of field.



### Super HD Texture Capturing

With its HD color reproduction, iReal 2E deeply fulfills the visual experience of texture capturing in various fields.



### Invisible Light 3D Experience

Infrared VCSEL structured light brings you the safest and most comfortable 3D scanning experience, eliminating the issues of dazzling lights and difficulty of hair scanning.



### Optimized Algorithm

Rapid texture capturing and geometry acquisition without markers; strengthen the ability of capturing reflective textures; mixed alignment modes meet various scanning situations.



**Human Body**  
Medical field, body part customization, 3D printing portrait, body art

**Digital Sculpture**  
Stone/wood carving, clay/urban sculpture, statue of cultural relics

**Texture Acquisition**  
Culture relics digitalization, furniture online display, VR/AR rapid modeling, e-commerce 3D display

**Industry/Art Design**  
University reverse design training, 3D printing, vehicle redesign, movie props